

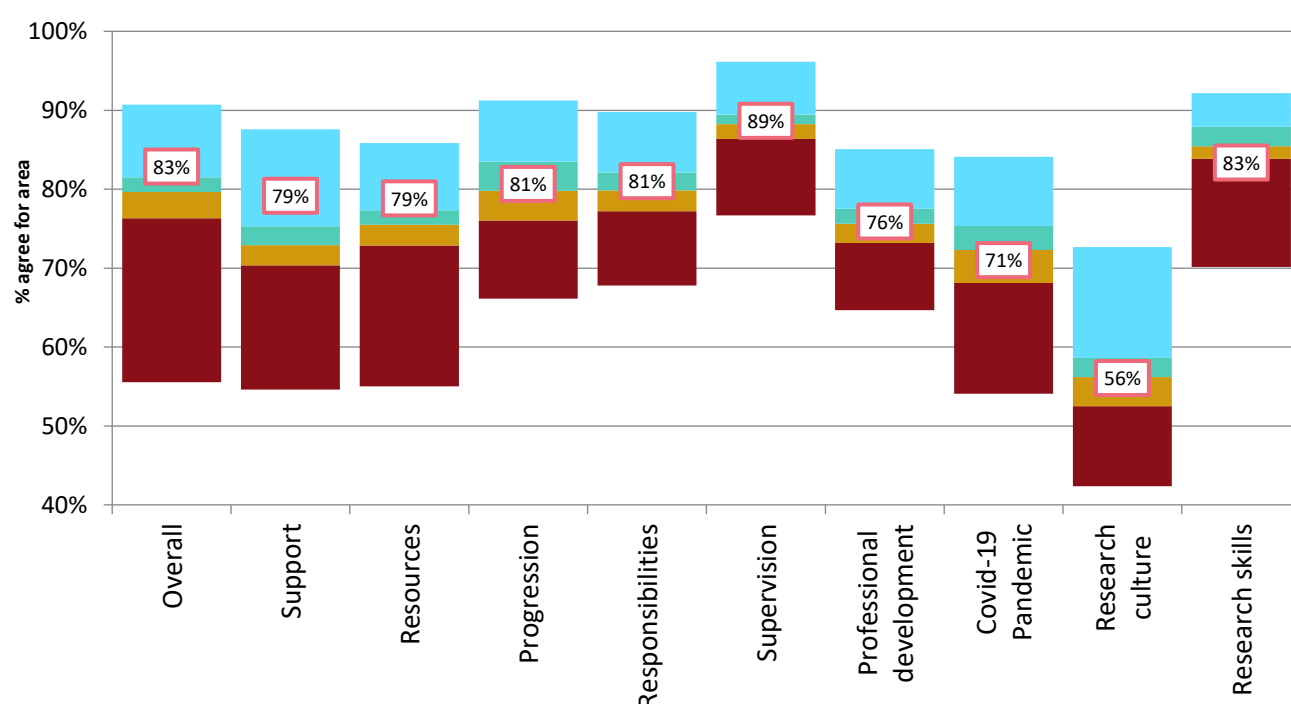
## PRES 2021 Results: short summary

The Postgraduate Research Experience Survey (PRES) is coordinated by Advance HE to explore the experiences of postgraduate research (PGR) students across Higher Education Institutions (HEIs) in the UK and internationally. The survey allows institutions to compare postgraduate provision against others in the sector, and to identify areas for improvement.

LJMU runs PRES every alternate year. 362 LJMU PGRs responded to PRES in 2021, a 46% response rate.

### LJMU Results: areas of experience in relation to the Global benchmark

The graph below shows the position of LJMU in relation to the 94 institutions that took part in 2021. PRES questions were divided into the 10 areas of experience below, and the percentages represent the average satisfaction across all of the questions relating to that area.



<b>Key:</b>	50%	Liverpool John Moores University
<b>Highest quarter</b>		In the top 25% of institutions for this area
<b>Second quarter</b>		Above average, but below the top 25%
<b>Third quarter</b>		Below average, but above the bottom 25%
<b>Lowest quarter</b>		In the bottom 25% of institutions for this area

LJMU was most often in the highest or second quarter. The area LJMU respondents were most positive about was **Support**, which was 6% above the Global benchmark, and ranked 8<sup>th</sup> out of all the participating institutions. The areas respondents were least positive about were **Research culture** and **Research skills**, which were both 2% below the Global benchmark.

**Support** was a new category this year and covered support for academic skills, IT, and health and wellbeing. **Covid-19 pandemic** was also a new area this year, and asked about

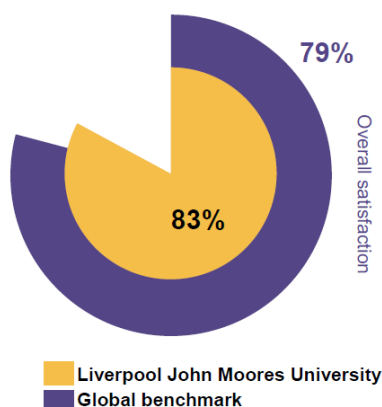
communications and support from the institution during the pandemic. LJMU was in the third quarter for this although there was a wide variation between faculties in this area (see faculty results below).

### Longitudinal results: 2017-2021

Area	2017	2019	2021
Overall experience	Second quarter	Third quarter	Highest quarter
Resources	Third quarter	Highest quarter	Highest quarter
Progression	Third quarter	Second quarter	Second quarter
Responsibilities	Second quarter	Second quarter	Second quarter
Supervision	Second quarter	Second quarter	Second quarter
Professional development	Highest quarter	Highest quarter	Second quarter
Research Culture	Highest quarter	Second quarter	Third quarter
Research skills	Third quarter	Highest quarter	Lowest quarter

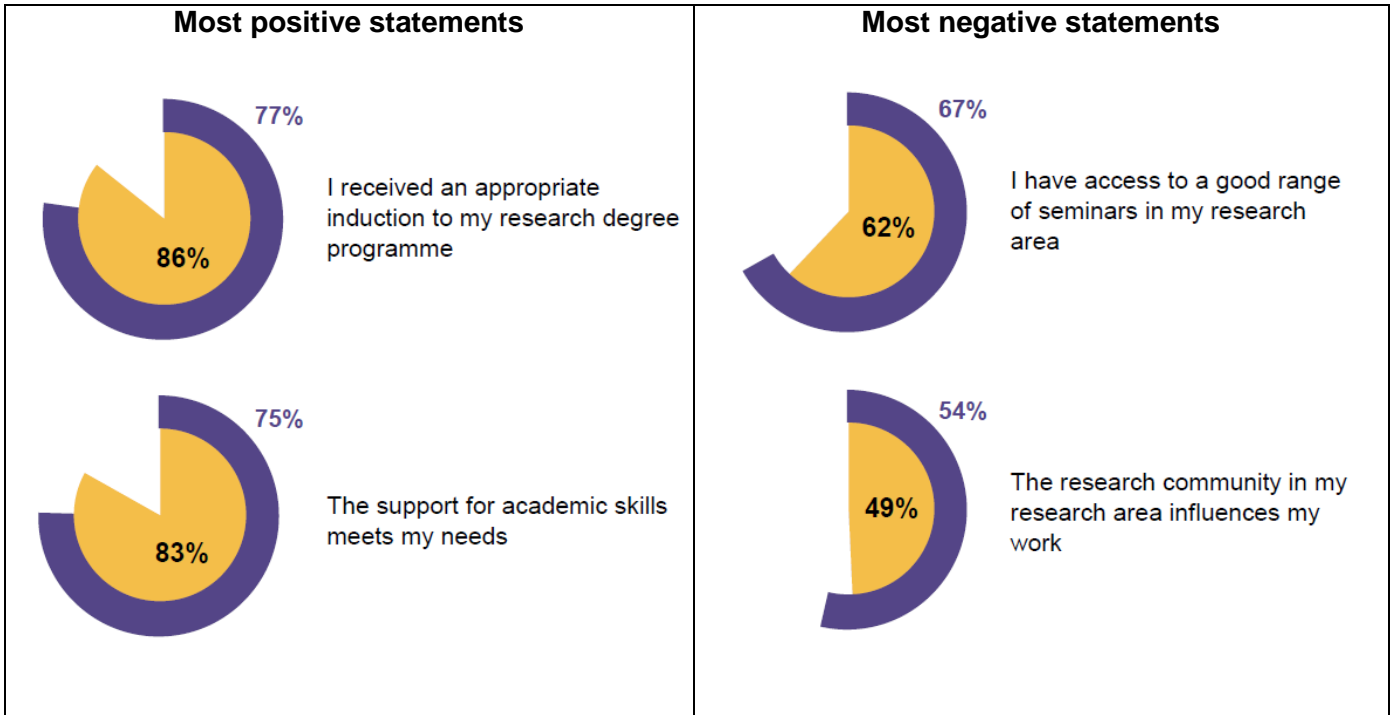
In comparison with 2019, **Resources, Supervision, Responsibilities, Progression,** and **Professional development** have all remained above the Global average, in the highest or second quarter. **Overall experience** has moved from the third quarter to the highest. **Research culture** moved from the second the third quarter, but the biggest drop was in **Research skills**, which moved from the highest quarter in 2019 to the lowest quarter in 2021.

### Overall satisfaction, most positive and most negative statements

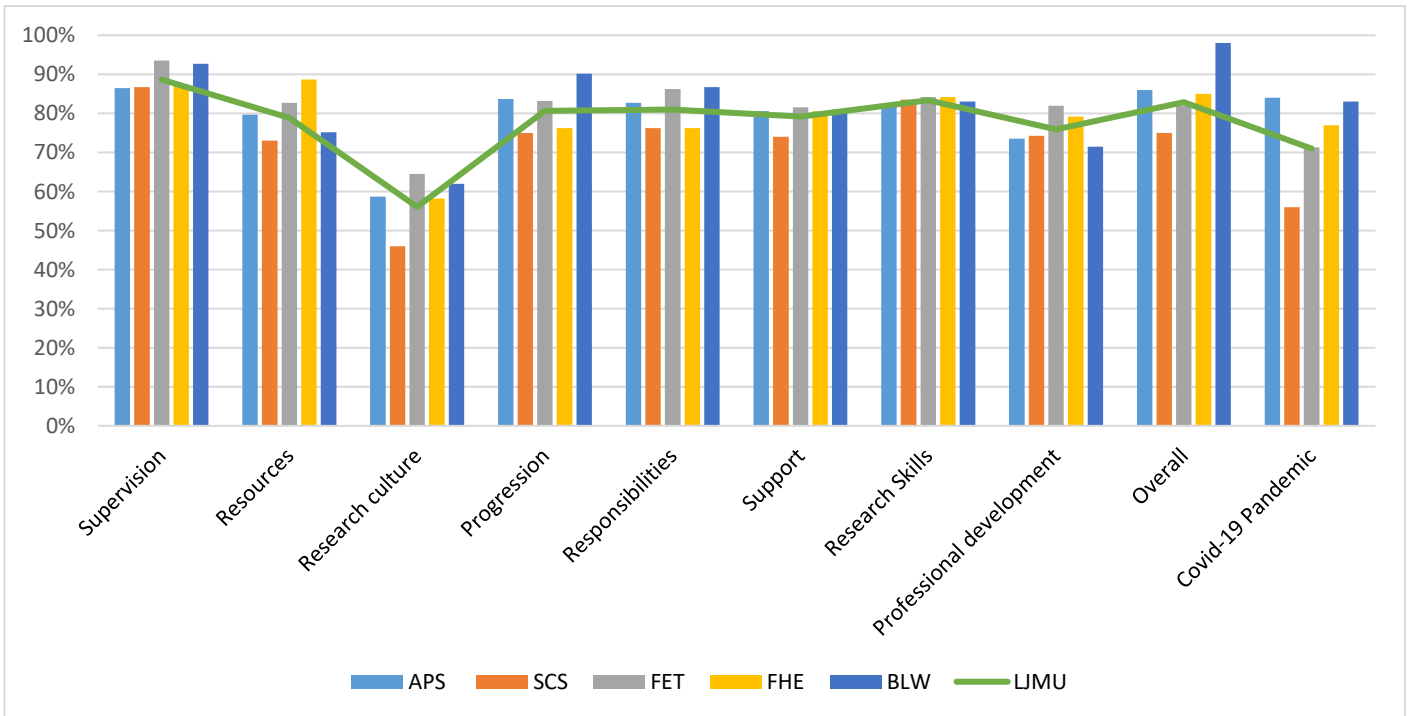


The overall satisfaction LJMU respondents had with their studies in 2021 was 83%, this was 4% higher than the score for Global institutions.

86% of students stated there was appropriate induction to the programme, 9% above the Global benchmark. Less positively, relative to the benchmark, just 62% of respondents stated there was a good range of seminars in their research area.



**Areas of experience: faculty breakdown**



APS: Arts, Professional and Social Studies  
 SCS: Science  
 FET: Engineering and Technology  
 FHE: Health  
 BLW: Business and Law

The areas with the most pronounced variation between faculties were **Resources** (SCS average 73%, FHE average 89%), **Research culture** (FET average 89%, SCS average 46%), **Progression** (BLW average 90%, SCS and FHE average 76%),

**Overall experience** (BLW average 98%, SCS average 75%) and **Covid-19 Pandemic** (APS average 83%, SCS average 56%).